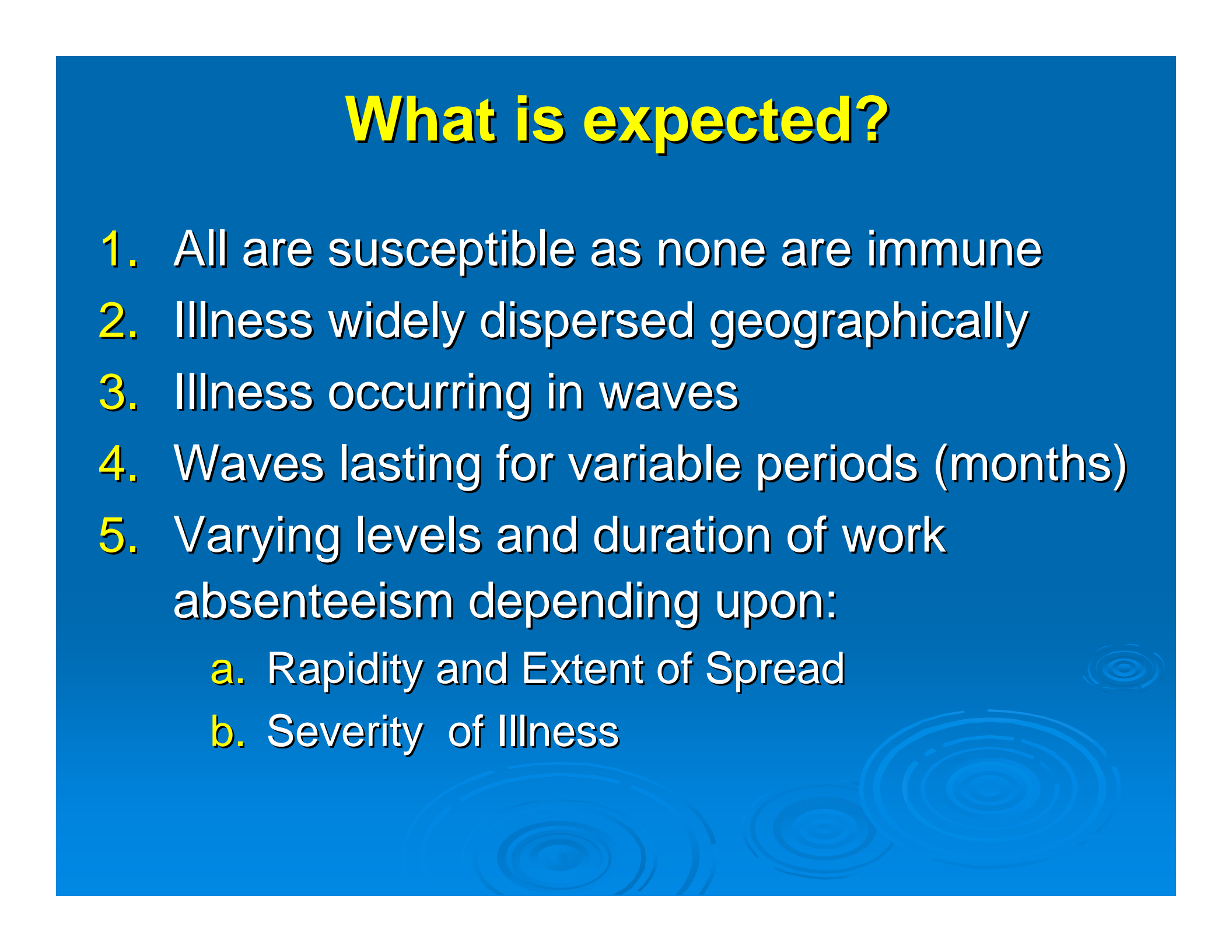


Whole of Society Pandemic Readiness



What is expected?

1. All are susceptible as none are immune
 2. Illness widely dispersed geographically
 3. Illness occurring in waves
 4. Waves lasting for variable periods (months)
 5. Varying levels and duration of work absenteeism depending upon:
 - a. Rapidity and Extent of Spread
 - b. Severity of Illness
- 

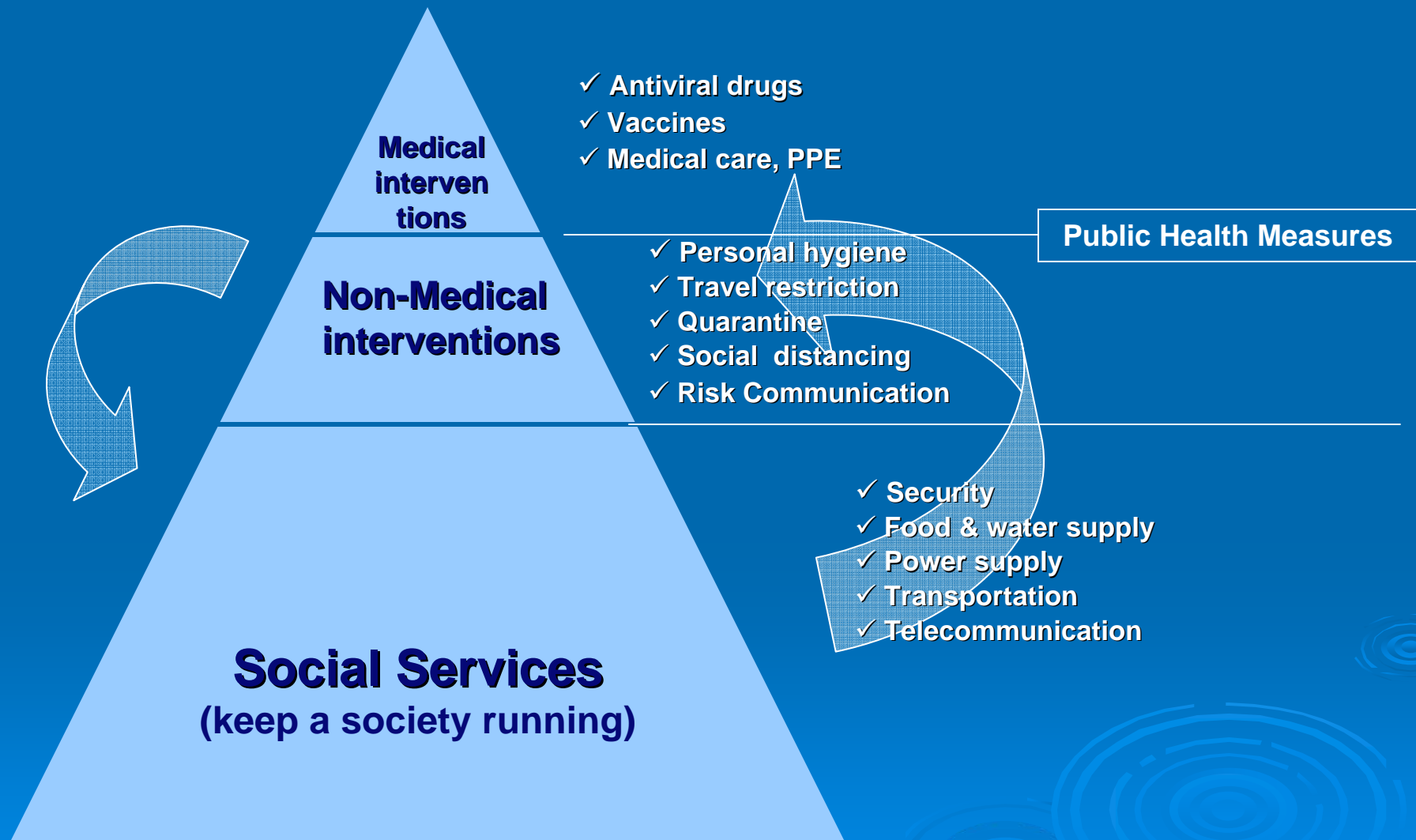
What is expected?

6. Absenteeism due to:
 - a. illness of worker
 - b. caring for an ill dependant
 - c. social distancing (office / school closures)
 - d. fear of exposure to illness
 - e. death of worker
7. Workforce absenteeism may cause:
 - a. disruption of essential services
 - b. discontinuity of business operations

What is expected?

8. Travel restrictions, event cancellations and business/office/institutional closures – have independent societal impacts
9. Pandemic influenza vaccines not likely to be available during first wave of pandemic
10. Health system coping capacity affected by:
 - a. rate of absenteeism of health personnel
 - b. number of ill individuals seeking care
 - c. inter-dependencies on support services
 - d. adequacy of drugs, supplies & equipments

Pandemic Response Pyramid



Essential Services

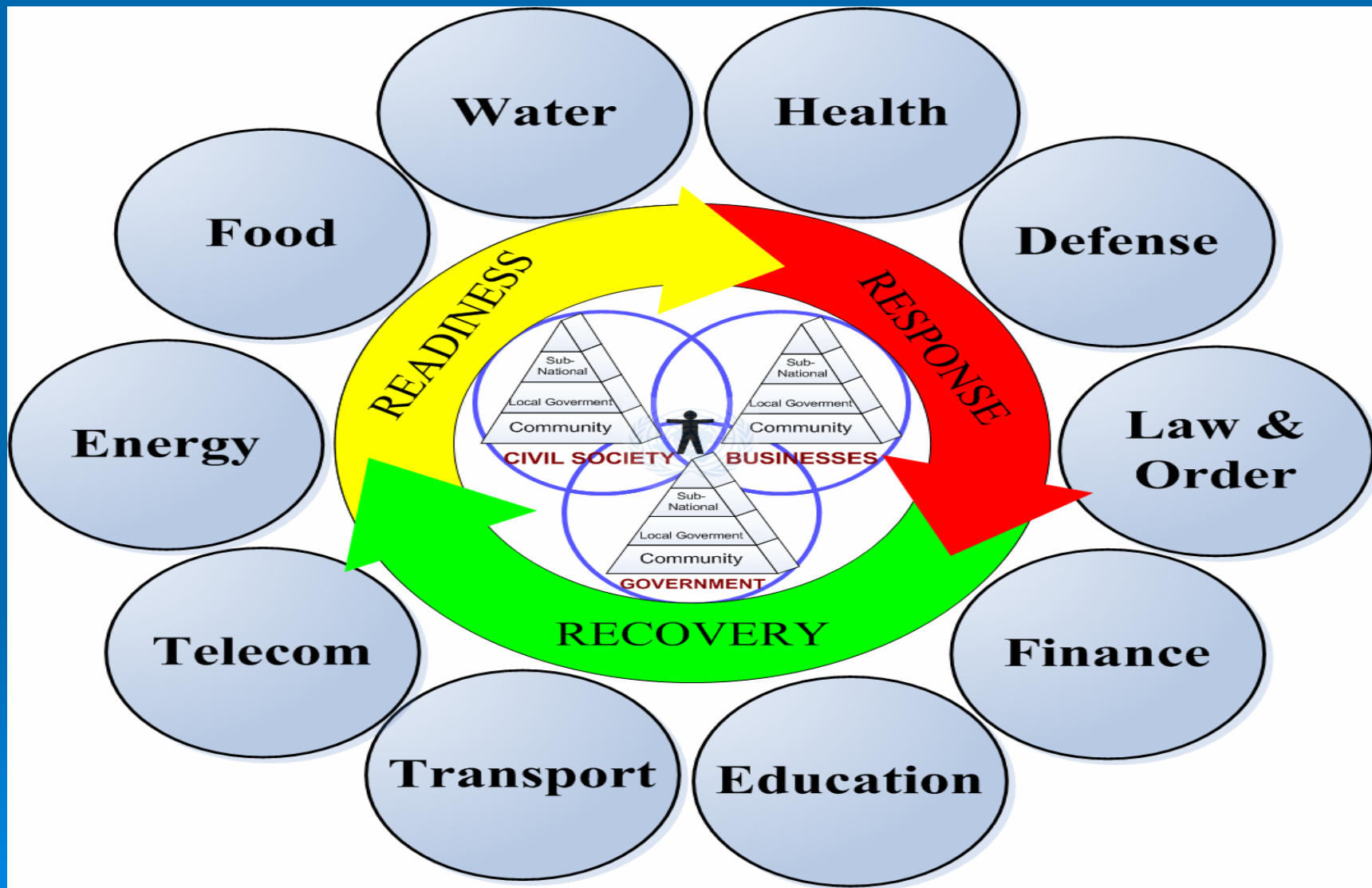
1. Essential services during a pandemic are those that:
 - a. face increased demand to fulfill basic necessities and social needs
 - b. directly support reduction in deaths and hospitalizations
 - c. provide healthcare or emergency services
2. Essential services must be maintained to reduce illness, deaths and societal disruption
3. Protecting healthcare & other essential services personnel ensures best possible pandemic response

Business Continuity

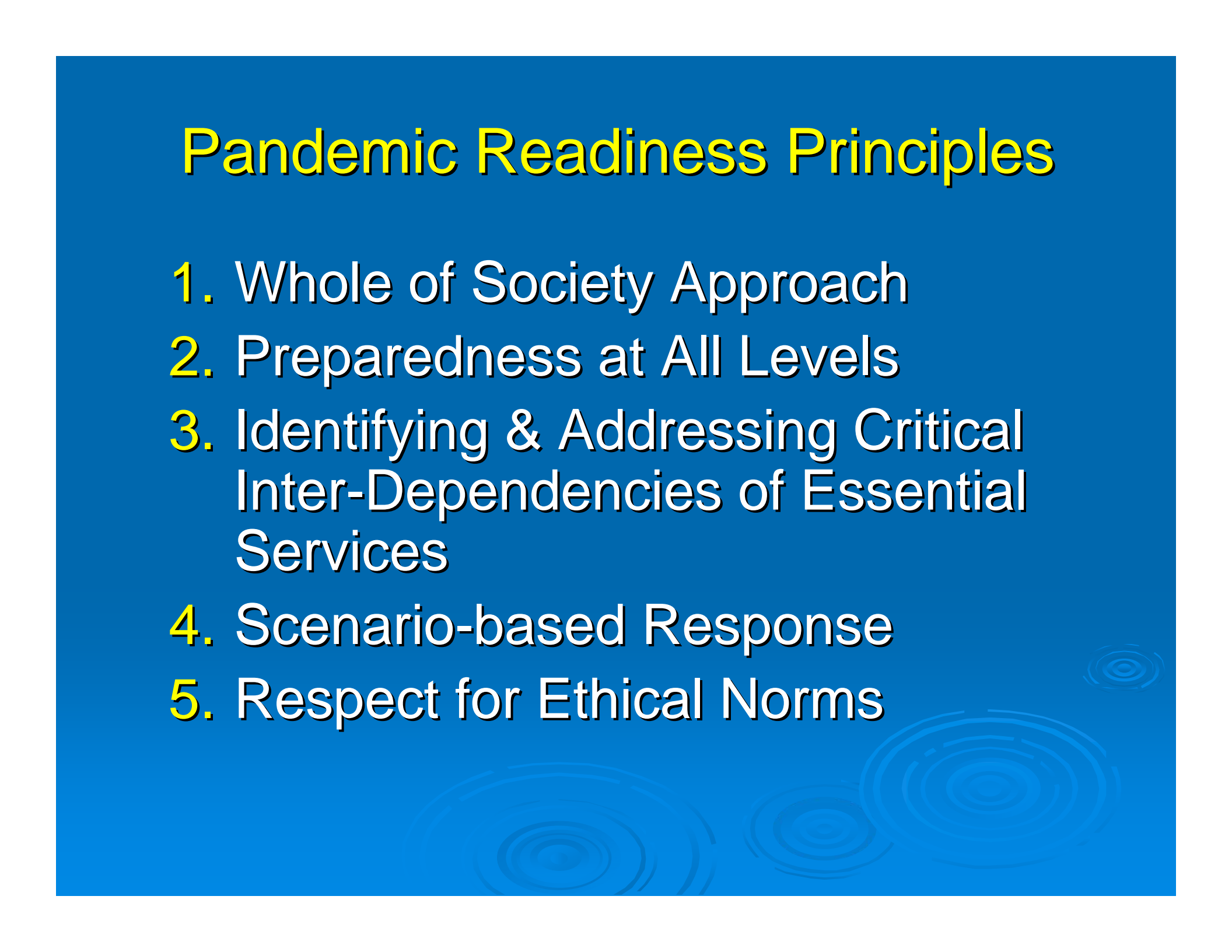
Systematic readiness by all enterprises:

1. Identify critical functions
2. Identify personnel, supplies & equipment
3. Assess need to stockpile
4. Who is going to do what, when & how?
5. Assign and train alternates
6. Guidelines for priority of access to services
7. Train staff on health and safety
8. Test social distancing measures
9. Fine-tune contingency plan through simulations
10. Share contingency plan with enterprise partners

Whole of Society Pandemic Readiness



Pandemic Readiness Principles

1. Whole of Society Approach
 2. Preparedness at All Levels
 3. Identifying & Addressing Critical Inter-Dependencies of Essential Services
 4. Scenario-based Response
 5. Respect for Ethical Norms
- 

Pandemic Readiness Outcomes

Whole of Society Pandemic Readiness :

- Ensures Pandemic Preparedness & Response Planning Beyond Health to :-
 - ✓ Enhance Health Sector Effectiveness for -
 - Reducing number of individuals becoming ill
 - Reducing adverse outcomes and deaths due to illness
 - ✓ Enhance Continuity of Essential Services
 - ✓ Enhance Business Continuity
 - ✓ Strengthen Resilience to Other Threats

- Resulting in Overall Reduction of:
 - ✗ Adverse Health Impacts
 - ✗ Adverse Social Impacts
 - ✗ Adverse Economic Impacts

Thank You





Whole of Society Approach

- Governments, businesses and civil society
- Concerted and collaborative effort
- Essential infrastructure and services

Preparedness at All Levels

- National and State Level - Leadership
- Local Level - Action
- Integration into national, regional & local disaster management structures, plans & processes
- Planning should be based around 3 crisis management stages:
 - Readiness
 - Response
 - Recovery

Critical Inter-Dependencies of Essential Services Providers

- Widespread illness is likely to result in sudden and significant shortages of personnel to provide essential services
 - Complex vulnerabilities
 - Identify essential outputs
 - Identify critical goods and services
 - Map suppliers
 - Plan how to mitigate failure

Health Sector Interdependencies

- Transport
- Telecommunications
- Energy
- Water
- Pharmaceuticals
- Finance



Scenario-based Response

- Severity of pandemic unknown
- Plan for different scenarios using clearly defined assumptions
- Specify actions to be taken in the event of different scenarios
- Clarity on actions to be taken in worst case scenario is important
- It is prudent to plan for the worst, while hoping for the best

Ethical Considerations

- Needs and rights of vulnerable addressed
- Equitable access to health & vital services
- Access to information for all sections
- Communications tailored to overcome obstacles vulnerable groups face in accessing information
- Wide engagement in planning for response
- Evaluate and monitor impact
- Balance between safety of staff and delivery of services to vulnerable groups

Specific Roles for Stakeholders

- Government
 - Line Ministries
 - Private sector
 - Civil society
 - Humanitarians
 - Local government
 - Employers
- 

Legal Aspects

- Health policy
- Public order
- Labour issues
- Identify modifications to existing measures
- Identify gaps in legal system
- Prepare legal texts + plan ratification and implementation
- Develop mechanisms to implement IHR